

**DOOR SCHEDULE - HOUSE "A" AND HOUSE "B"**

ALL DOORS SHALL HAVE ACCESSIBLE HARDWARE.

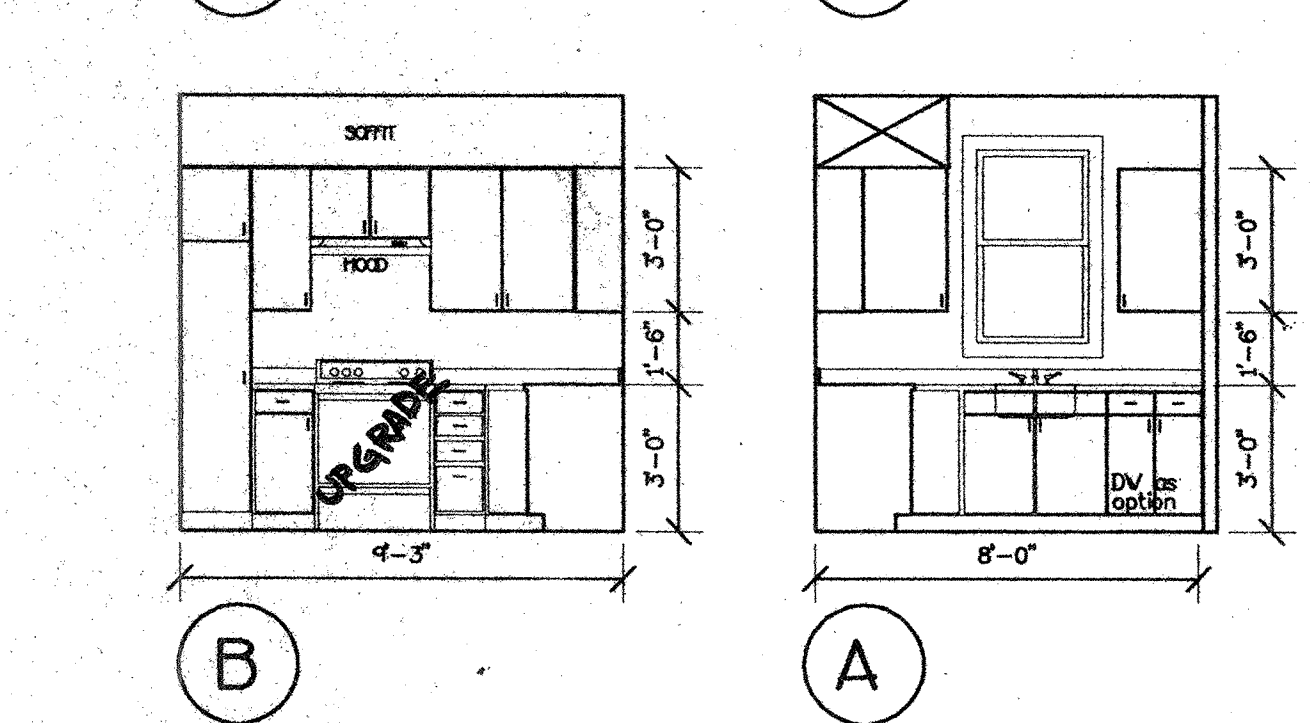
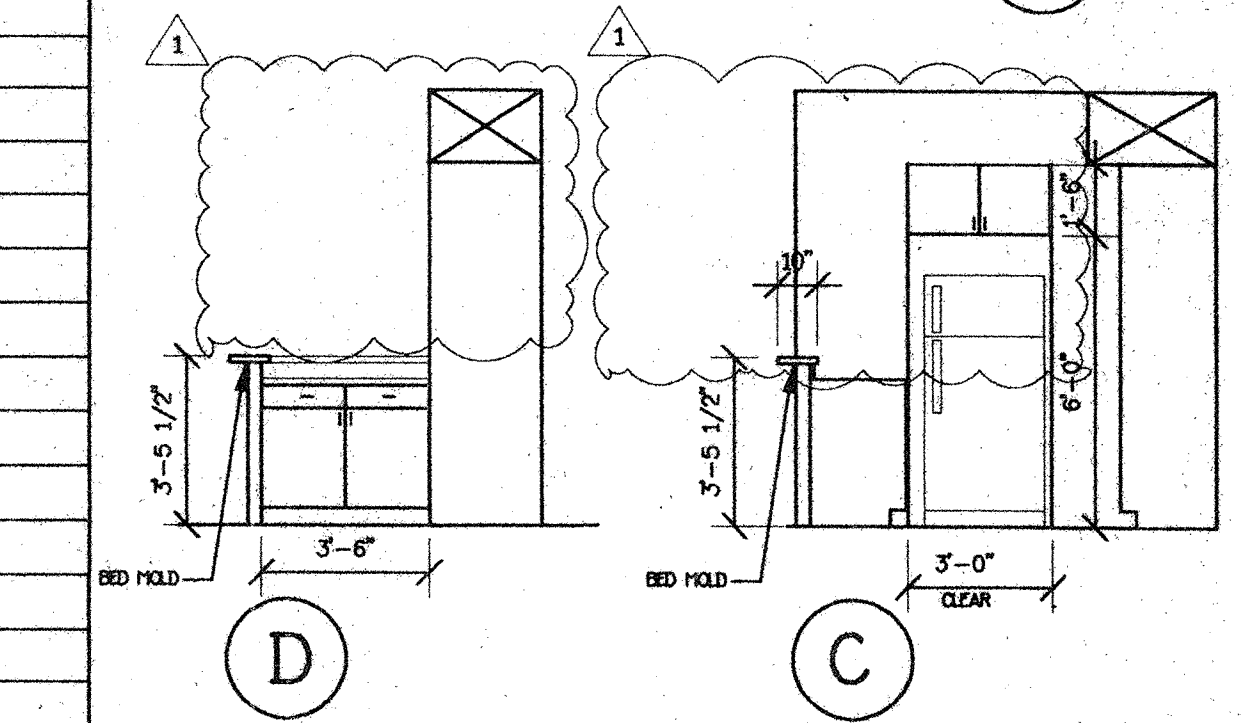
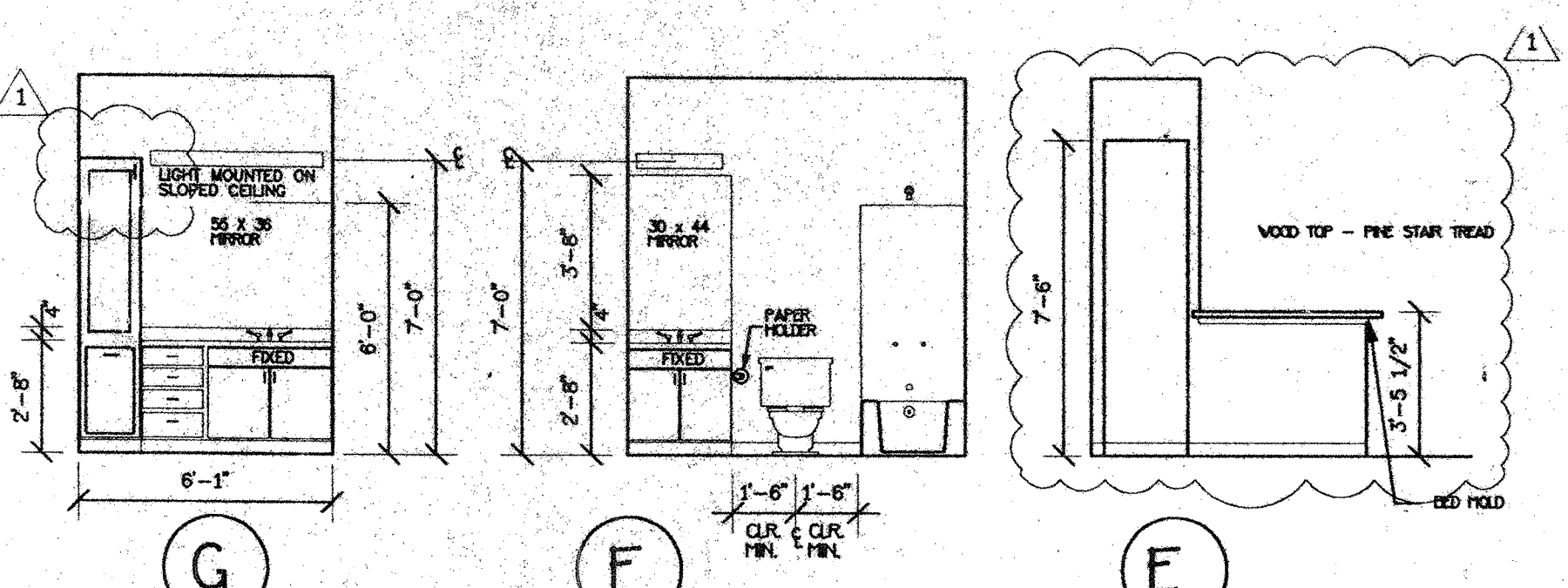
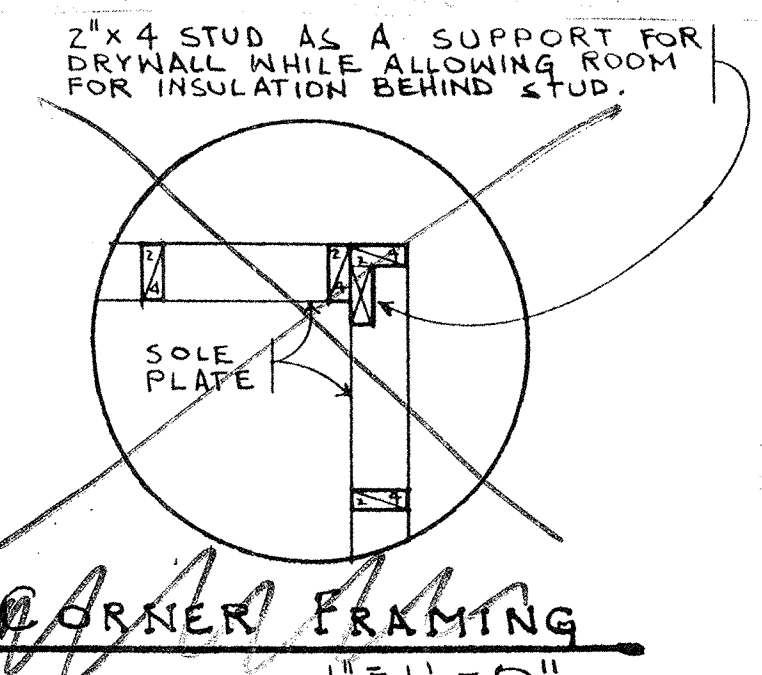
DOOR NUMBER	SIZE	CONSTRUCTION	HARDWARE/REMARKS
1	3'0" x 6'8" 1/2"	INSULATED FRIGELASS INSULATED W/ FULL LIGHT INSULATED, TEMPERED GLASS HOLLOW CORE HARDBOARD	P.L. PASSAGE LATCHSET C.L. CYLINDER LATCHSET P.R.L. PRIVACY LOCKSET D-1 DEADBOLT-KEYED ONE SIDE AL.T.1 ALUMINUM THRESHOLD (HANDICAP ACCESS) W.S. WEATHERSTRIPPING S.L. STORAGE LOCK D.S. DOOR STOP C.S. CHAIN STOP H.S. HINGE STOP TR. 1'-0" TRANSOM
2	3'0" x 6'8" 1/2"	TR. ALT-1 CL. D-1 W.S. D.S.	
3	3'0" x 6'8" 1/2"	TR. ALT-2 CL. D-1 W.S. H.S.	
4	2'10" x 6'8" 1/2"	P.R.L. D.S.	
5	2'6" x 6'8" 1/2"	P.R.L. D.S.	
6	2'6" x 6'8" 1/2"	P.L. H.S.	
7	1'4" x 6'8" 1/2"	P.L.	
8	6'0" x 6'8" 1/2"		
9	5'0" x 6'8" 1/2"		
10	2'6" x 6'8" 1/2"		
11	3'0" x 6'8" 1/2"		
12	2'6" x 6'8" 1/2"	P.L. (ATTIC ACCESS DOOR) SOLID BRNCH FLUSH	
13	9'0" x 6'8" 1/2"	(3) 3'-0" PANELS	
14	2'6" x 6'8" 1/2"		
15	2'6" x 6'8" 1/2"		
16	2'6" x 6'8" 1/2"		
17	2'6" x 6'8" 1/2"		
18	2'6" x 6'8" 1/2"		
19	2'6" x 6'8" 1/2"		
20	2'6" x 6'8" 1/2"		
21	2'6" x 6'8" 1/2"		
22	2'6" x 6'8" 1/2"		
23	2'6" x 6'8" 1/2"		
24	2'6" x 6'8" 1/2"		
25	2'6" x 6'8" 1/2"		
26	2'6" x 6'8" 1/2"		
27	2'6" x 6'8" 1/2"		
28	2'6" x 6'8" 1/2"		
29	2'6" x 6'8" 1/2"		
30	2'6" x 6'8" 1/2"		
31	2'6" x 6'8" 1/2"		
32	2'6" x 6'8" 1/2"		
33	2'6" x 6'8" 1/2"		
34	2'6" x 6'8" 1/2"		
35	2'6" x 6'8" 1/2"		
36	2'6" x 6'8" 1/2"		
37	2'6" x 6'8" 1/2"		
38	2'6" x 6'8" 1/2"		
39	2'6" x 6'8" 1/2"		
40	2'6" x 6'8" 1/2"		
41	2'6" x 6'8" 1/2"		
42	2'6" x 6'8" 1/2"		
43	2'6" x 6'8" 1/2"		
44	2'6" x 6'8" 1/2"		
45	2'6" x 6'8" 1/2"		
46	2'6" x 6'8" 1/2"		
47	2'6" x 6'8" 1/2"		
48	2'6" x 6'8" 1/2"		
49	2'6" x 6'8" 1/2"		
50	2'6" x 6'8" 1/2"		
51	2'6" x 6'8" 1/2"		
52	2'6" x 6'8" 1/2"		
53	2'6" x 6'8" 1/2"		
54	2'6" x 6'8" 1/2"		
55	2'6" x 6'8" 1/2"		
56	2'6" x 6'8" 1/2"		
57	2'6" x 6'8" 1/2"		
58	2'6" x 6'8" 1/2"		
59	2'6" x 6'8" 1/2"		
60	2'6" x 6'8" 1/2"		
61	2'6" x 6'8" 1/2"		
62	2'6" x 6'8" 1/2"		
63	2'6" x 6'8" 1/2"		
64	2'6" x 6'8" 1/2"		
65	2'6" x 6'8" 1/2"		
66	2'6" x 6'8" 1/2"		
67	2'6" x 6'8" 1/2"		
68	2'6" x 6'8" 1/2"		
69	2'6" x 6'8" 1/2"		
70	2'6" x 6'8" 1/2"		
71	2'6" x 6'8" 1/2"		
72	2'6" x 6'8" 1/2"		
73	2'6" x 6'8" 1/2"		
74	2'6" x 6'8" 1/2"		
75	2'6" x 6'8" 1/2"		
76	2'6" x 6'8" 1/2"		
77	2'6" x 6'8" 1/2"		
78	2'6" x 6'8" 1/2"		
79	2'6" x 6'8" 1/2"		
80	2'6" x 6'8" 1/2"		
81	2'6" x 6'8" 1/2"		
82	2'6" x 6'8" 1/2"		
83	2'6" x 6'8" 1/2"		
84	2'6" x 6'8" 1/2"		
85	2'6" x 6'8" 1/2"		
86	2'6" x 6'8" 1/2"		
87	2'6" x 6'8" 1/2"		
88	2'6" x 6'8" 1/2"		
89	2'6" x 6'8" 1/2"		
90	2'6" x 6'8" 1/2"		
91	2'6" x 6'8" 1/2"		
92	2'6" x 6'8" 1/2"		
93	2'6" x 6'8" 1/2"		
94	2'6" x 6'8" 1/2"		
95	2'6" x 6'8" 1/2"		
96	2'6" x 6'8" 1/2"		
97	2'6" x 6'8" 1/2"		
98	2'6" x 6'8" 1/2"		
99	2'6" x 6'8" 1/2"		
100	2'6" x 6'8" 1/2"		

NOTE: DOORS TO UNHEATED ATTIC TO BE FULLY WEATHER STRIPPED W/ THRESHOLD

**WINDOW SCHEDULE - HOUSE "A" AND HOUSE "B"**

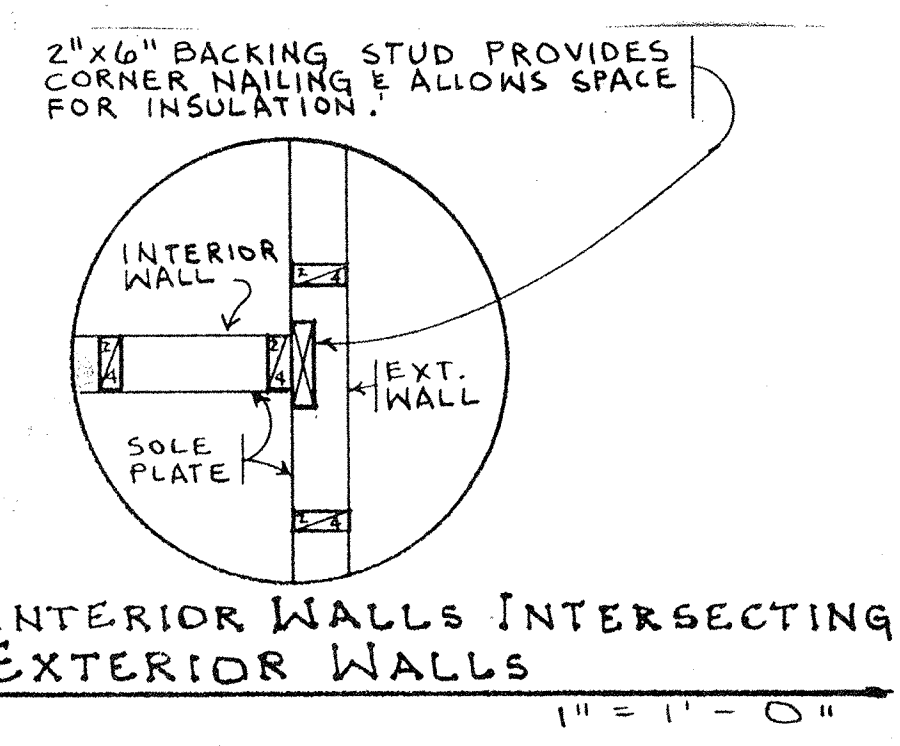
WINDOW SIZES ARE CARADCO PRIMED WOOD WINDOWS WITH INSULATED GLASS. OPERABLE WINDOWS SHALL HAVE SCREENS, TYP.

MARK	SIZE (WXH; R.O.)	SIZE (NAME)	MATERIAL	GLAZING	TYPE	REMARKS
A	8'-5" X 5'-5"	U3-2828	WOOD	CLEAR W/ARGON	DOUBLE-HUNG	
B	5'-7.5" X 5'-5"	U2-2828	WOOD	LOW-E W/ARGON	DOUBLE-HUNG	
C	2'-10" X 5'-5"	U1-2828	WOOD	LOW-E W/ARGON	DOUBLE-HUNG	
D	5'-7.5" X 4'-9"	U2-2824	WOOD	LOW-E W/ARGON	DOUBLE-HUNG	
E	2'-10" X 4'-9"	U1-2824	WOOD	LOW-E W/ARGON	DOUBLE-HUNG	
F	NOT USED					
G	1'-10" X 4'-9"	U1-1624	WOOD	LOW-E W/ARGON	DOUBLE-HUNG	
H	2'-6" X 4'-1"	U1-2420	WOOD	LOW-E W/ARGON	DOUBLE-HUNG	
I	3'-4.5" X 1'-5.5"	U11-3512	WOOD	LOW-E W/ARGON	AWNING	
J	2'-6" X 4'-9"	U1-2424	WOOD	LOW-E W/ARGON	DOUBLE-HUNG	
K	8'-5" X 2'-1"	(3) 2820	WOOD	CLEAR W/ARGON	FIXED	STANDARD TRANSOM WINDOW
L	5'-7.5" X 3'-1"	(2) 28210	WOOD	CLEAR W/ARGON	FIXED	DBL HUNG SASH TRANSOM WIDTH TO MATCH "B" X 2'0" HIGH
M	2'-10" X 2'-1"	(1) 2820	WOOD	LOW-E W/ARGON	FIXED	STANDARD TRANSOM WINDOW
N	3'-2" X 3'-1"	(1) 30210	WOOD	CLEAR W/ARGON	FIXED	DBL HUNG SASH TRANSOM WIDTH TO DOOR "2" X 2'0" HIGH
O	2'-10" X 3'-5"	U1-2816	WOOD	LOW-E W/ARGON	DOUBLE-HUNG	
P	5'-7.5" X 4'-1"	U2-2820	WOOD	CLEAR W/ARGON	DOUBLE-HUNG	
Q	5'-7.5" X 5'-5"	U2-2828	WOOD	CLEAR W/ARGON	DOUBLE-HUNG	TEMPER WINDOW CLOSEST TO DOOR IN HOUSE "A" ONE-STORY PLAN ONLY
R	5'-7.5" X 4'-9"	U2-2824	WOOD	CLEAR W/ARGON	DOUBLE-HUNG	
S	2'-10" X 4'-9"	U1-2824	WOOD	CLEAR W/ARGON	DOUBLE-HUNG	



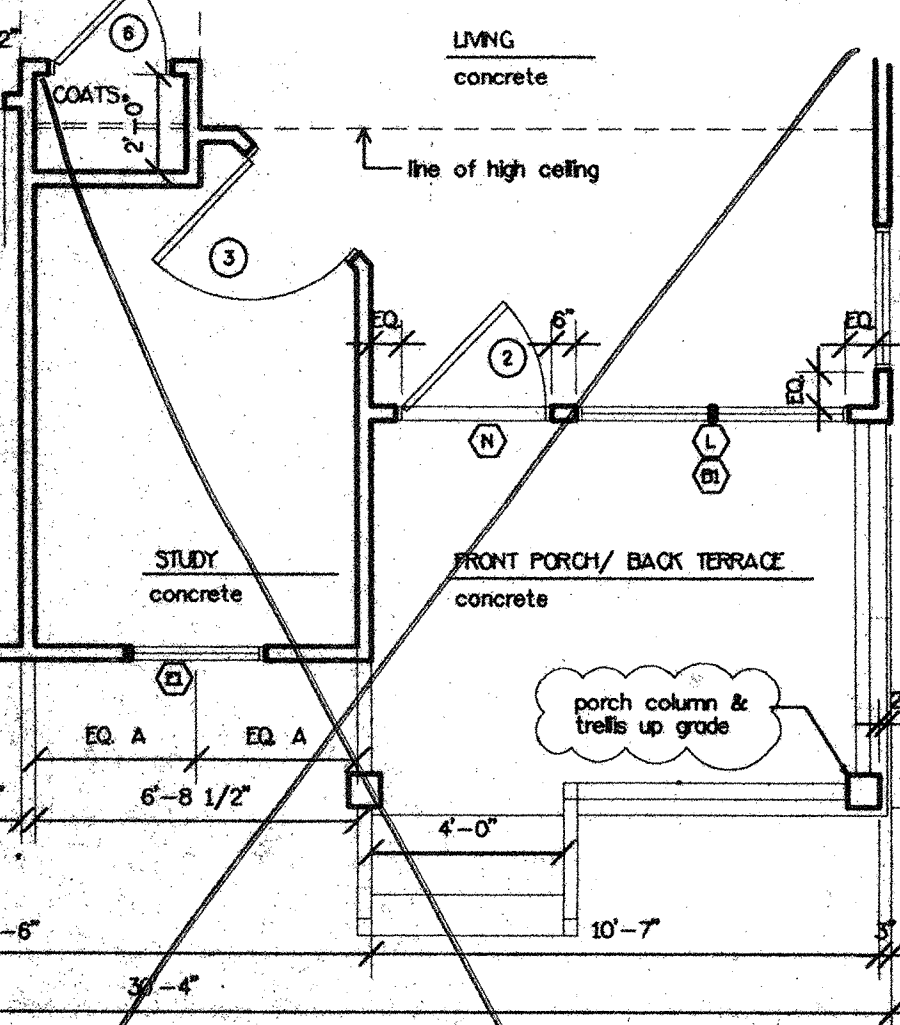
ALL CABINET LAYOUTS BY CABINET SUPPLIER

3 INTERIOR ELEVATIONS  
1/4" = 1'-0"

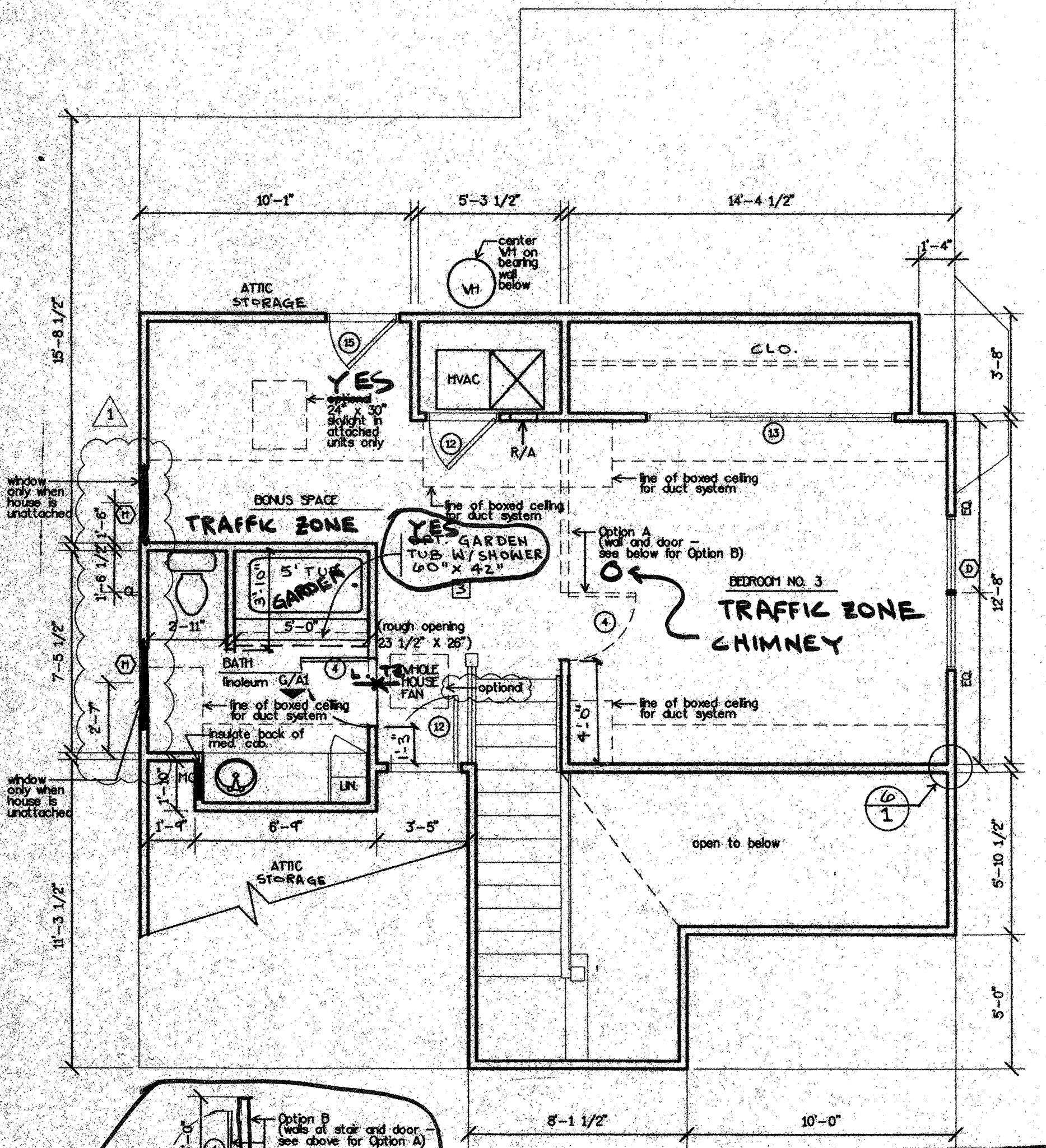


NOTE: HVAC unit and hot water heater located in roof trusses this plan only

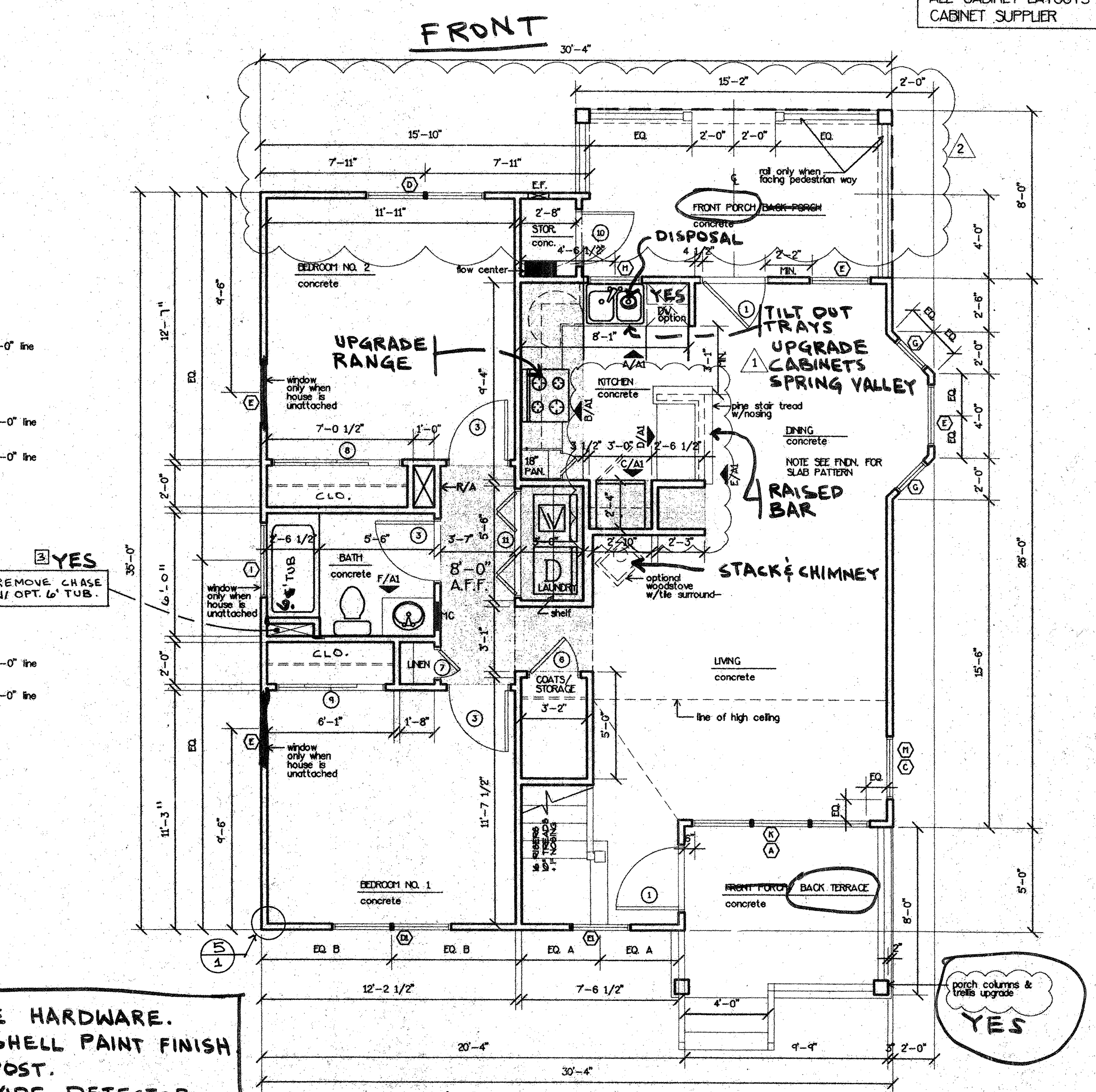
PARTS OF PLAN NOT SHOWN ARE IDENTICAL TO TWO STORY PLAN'S GROUND FLOOR PLAN



HOUSE "A" ONE-STORY PLAN FIRST FLOOR ONLY  
1/4" = 1'-0"  
962 SF



HOUSE "A" TWO-STORY PLAN UPPER FLOOR PLAN  
1/4" = 1'-0"  
521 SF



HOUSE "A" TWO-STORY PLAN GROUND FLOOR PLAN  
1/4" = 1'-0"  
962 SF (1483 SF BOTH FLOORS)

- LEVER HANDLE HARDWARE.
- INTERIOR EGGSHELL PAINT FINISH
- TRELLIS AND POST.
- CARBON MONOXIDE DETECTOR.
- SOLID CORE INTERIOR DOORS.
- SENTRICON TERMITE TREATMENT

SHADED AREAS DENOTE FLURRED-DOWN CEILING, 7'-6" A.F.F., U.O.N.